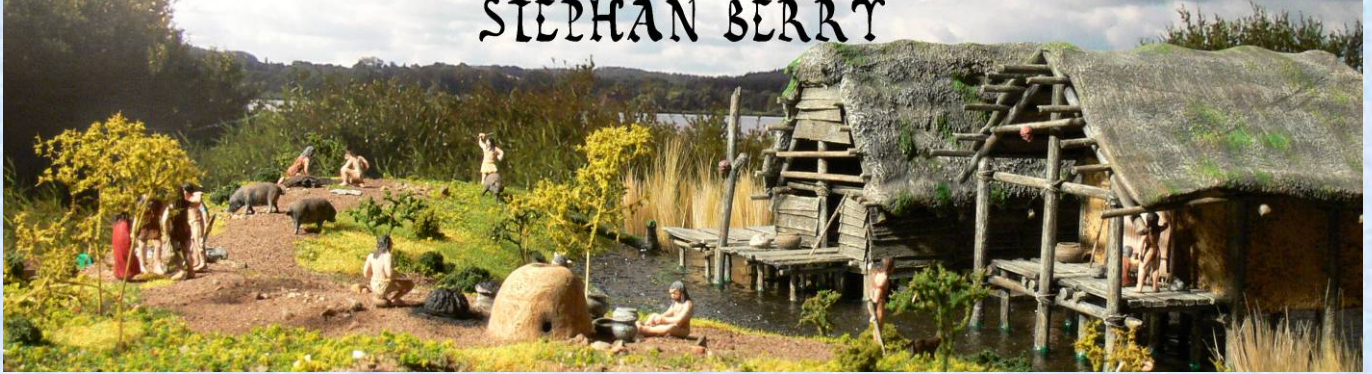


LACUS BENACUS ITALY BEFORE THE ROMANS STEPHAN BERRY



The diorama shows a little prehistoric scene involving the pile dwellings that were common around the Alps for several millennia, spanning the Neolithic, Copper, Bronze and early Iron Ages. While a large number of such sites have been discovered north of the Alps (in particular around Lake Constance), there are also numerous finds from the regions on the southern fringe of the Alps. In particular, at the Lago di Ledro and the Garda Lake such sites have been found; the Garda Lake was called Lacus Benacus in Roman times and thus gave rise to the title of this dio.

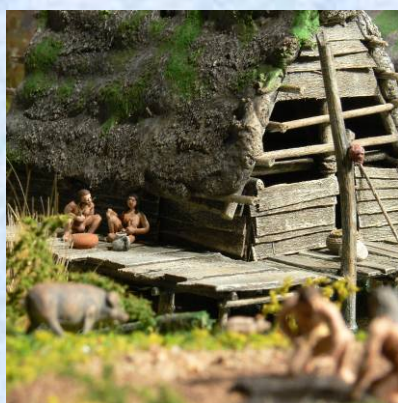




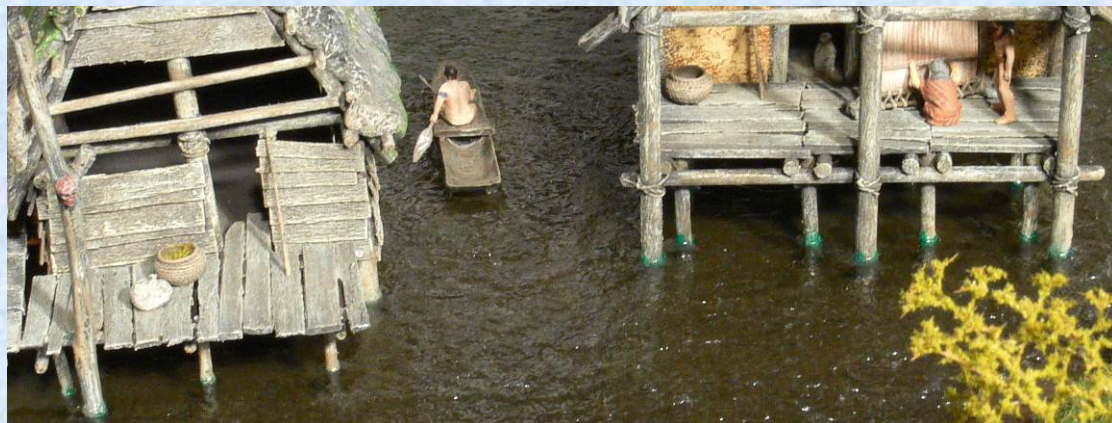
The figures in this diorama are mainly from the set PCCF - Prehistoric Cavemen Cave and Fire by Phersu Miniatures, with further figures and animals coming from Pegasus (sets 7051 and 7052) and Caesar Miniatures (set 014). The guy in the canoe is from Hät's Jungle Adventure (the re-issue of Airfix' Tarzan set). In addition, accessories in resin, ceramic casts and metal from various manufacturers have been used.







The buildings are scratch-built from wood with roofs made of epoxy putty. The water surface was cast using a liquid, transparent epoxy resin. After curing, the structure of the waves was added using Vallejo Still water and transparent acrylic gel.





© Text and pictures 2017 Stephan Berry / www.stephan.berry.de